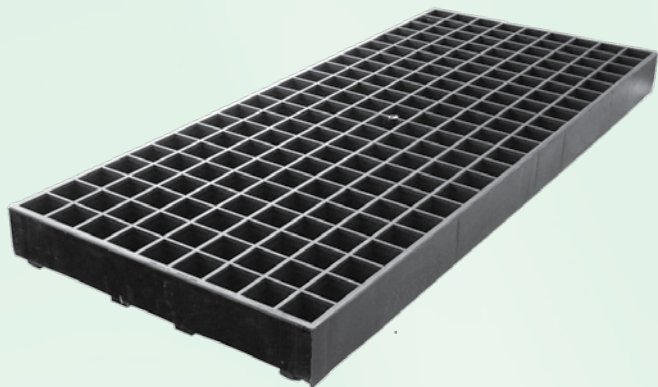


# Viscount SEEDLING TRAYS



*The Viscount propagating solution provides more options and flexibility to nurseries with a range of seedling trays. The trays have similar overall dimensions, while varying cell sizes and plate spacings cater for different application and plant types.*

## Viscount Plastics (Australia) Pty Ltd

188-198 Cobalt Street  
Carole Park Qld 4300  
PO Box 631 Sumner Park BC 4074

Tel: 1800 307 949  
Fax: 1800 203 738  
Fax +61 7 3271 3165  
Email: [industrial@viscount.com.au](mailto:industrial@viscount.com.au)  
Web: [www.viscount.com.au](http://www.viscount.com.au)  
ABN: 76007862393



## Benefits include -

- Australian designed, owned and manufactured
- Ideal for automated systems
- Strong, lightweight and robust
- Durable material
- Reinforced ribs provide rigidity
- Trays are easy to clean and sterilise
- Tapered cell design allows easy plant removal
- Impervious polypropylene prevents root penetration
- Provides maximum growing efficiency and increased productivity

### Propagator 144

28 cc Cell Capacity

659 Plants per sq metre

Propagator 144 has been designed especially for larger seedlings and cuttings. The cells of this tray hold more medium and have larger spacings, which some plants require. Ideal for tomato, capsicum, cuttings and small tree seedlings.

### Supacell 198

19cc Cell Capacity

900 Plants per sq metre

Supacell 198 is ideal for vegetable, flower and tree seedlings. Special features include rough cell walls to help with water retention, allowing better root structure with less chance of root balling occurring.

### Plantraiser 312

21 cc Cell Capacity

1417 Plants per sq metre

The Plantraiser 312 seedling tray, with its unique design, holds more plants per square metre. It is also ideal for most vegetable, flowers and tea tree seedlings.



## Viscount Seedling Tray Measurements (Nominal)

Product Description	Dimensions (mm)			
	Cells per Tray	Total Length	Total Width	Total Height
Propagator 144	144	711	311	50
Supacell 198	198	715	305	50
Plantraiser 312	312	712	310	50

## Viscount Seedling Tray Measurements (Nominal)

Product Description	Dimensions (mm)				
	Cell Top	Cell Bottom	Cell Depth	Cell Capacity	Plants per sq Metre
Propagator 144	36 x 37.5	7.5 x 9	47	28cc	659
Supacell 198	30 x 30	7 x 7	50	19cc	900
Plantraiser 312	25 x 25	8 x 8	50	21cc	1417

Viscount Plastics (Australia) Pty Ltd shall not accept liability of any kind arising out of misuse of the product or use for any other purpose than its intended use as contained herein. All information supplied in this brochure was correct at time of printing. Viscount Plastics (Australia) Pty Ltd reserves the right to change specifications, colours and designs without further notice. Effective 01.12.2010.

